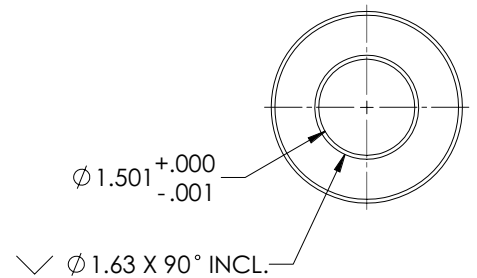
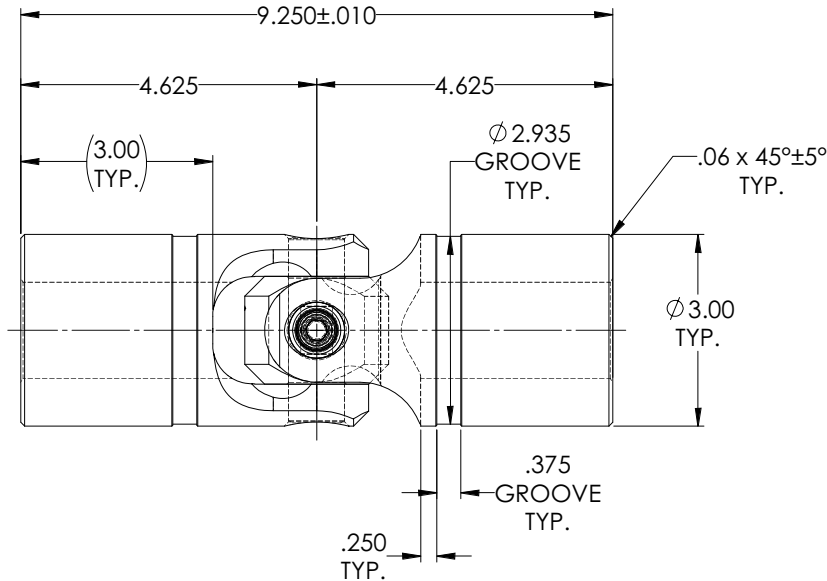
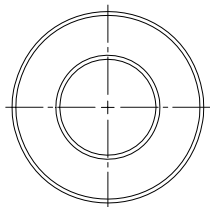
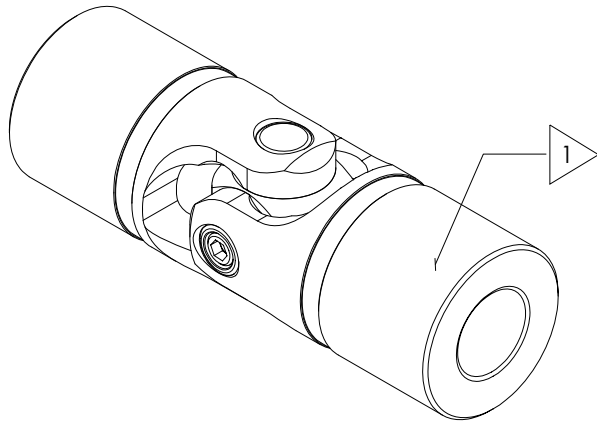


# APPROVED

| REVISIONS |      |             |      |          |
|-----------|------|-------------|------|----------|
| ZONE      | REV. | DESCRIPTION | DATE | APPROVED |
|           |      |             |      |          |

**INFORMATION IN THIS DRAWING  
PROVIDED FOR REFERENCE ONLY**



TYPICAL BOTH ENDS

NOTE(s), UNLESS OTHERWISE SPECIFIED.

- 1 MARK ASSEMBLY w/ "BELDEN" LOGO, PART NUMBER, REVISION LEVEL (IF ANY), DATE OF MANUFACTURE, & BELDEN JOB No.
- 2 TORQUE  $\phi 3/8-24$  SOCKET HEAD CAP SCREW TO 35 FT-LBS.
- 3 LUBRICATE WITH LUBRIPLATE® PRODUCT No. 1200-2 NLGI GRADE 2, AW/EP, LITHIUM GREASE OR EQUIVALENT.
- 4 REFERENCE, MAXIMUM OPERATING ANGLE: 45°.

DO NOT SCALE DRAWING

|  |   |   |  |   |   |
|--|---|---|--|---|---|
| UNLESS OTHERWISE SPECIFIED<br>CHAMFER ALL HOLES<br>BREAK ALL SHARP CORNERS<br>DE-BURR ALL FEATURES<br>TURNED SURFACES: $\checkmark$<br>MILLED SURFACES: $\checkmark$ | STANDARD TOLERANCES,<br>UNLESS OTHERWISE SPECIFIED<br>DIMENSIONS ARE IN INCHES [mm]   | MATERIAL<br>ALLOY STEEL   | INITIALS    DATE<br>DRAWN    AJH    08AUG18  | Belden Incorporated<br><a href="http://www.beldenuniversal.com">www.beldenuniversal.com</a><br>TITLE:<br><b>ASSEMBLY,<br/>UNIVERSAL JOINT</b> |   |
|  | ANGULAR MACHINED: $\pm 1.0^\circ$<br>FRACTIONAL: $\pm .015$<br>TWO PLACE DECIMAL: $\pm .010$<br>THREE PLACE DECIMAL: $\pm .005$<br>FOUR PLACE DECIMAL: $\pm .0005$<br>CONCENTRICITY: $.0025$ T.I.R.   | HEAT TREAT<br>SEE DETAIL(S)   | CHECKED    JMH    08/09/2018<br>ENG APPR.    RNK<br>MFG APPR.<br>QC APPR.<br>COMMENTS: |   |   |
|  | PROPRIETARY AND CONFIDENTIAL<br>THE INFORMATION CONTAINED IN THIS<br>DRAWING IS THE SOLE PROPERTY OF<br>BELDEN UNIVERSAL. ANY<br>REPRODUCTION IN PART OR AS A WHOLE<br>WITHOUT THE WRITTEN PERMISSION OF<br>BELDEN UNIVERSAL IS PROHIBITED. | ALL HOLES TO BE LOCATED ON<br>CENTERLINE (C) WITHIN .005" T.I.R.<br>INTERPRET GEOMETRIC TOLERANCES<br>I.A.W. ASME Y14.5 | FINISH<br>NONE   |   | SIZE    DWG. NO.    REV<br><b>A</b> UJ-HD3000x1500 <b>A</b> |
|  | SCALE: 2:3    WT (Lbs): 12.766    SHEET 1 OF 2  |   |  |   |   |